

MONOCOLOUR INTENSITY DIMMER TRIAC DALI + PUSH

LED CONTROLLERS

Ref: 41.081



230V

Features:

- Built-in DALI-2 interface, DALI DT6 device.
- AC phase cut dimmer with both DALI and push switch control interface.
- 100-240VAC wide input and output voltage.
- 1 DALI address to control 1 channel output, up to 200W.
- Input and output with screw terminals, safe and reliable.
- Trailing edge dimming, supports resistive loads and capacitive loads.
- Innovative minimum brightness setting function.
- Single wire push switch input for push dim function.
- Great compatibility with universal 8V-230V~ input push switches.
- To dim and switch single color dimmable led lamps, traditional incandescent and halogen lights.
- Mini size, easy to be installed into a standard size wall box.

Description:

It is an end-of-phase cut regulator with 1 channel controllable by Dali + Push. It has a Dali direction for output control up to 200W. The minimum level of regulation can be adjusted and is suitable for dimmable led lamps, halogen or power supplies (drivers) adjustable by end-of-phase cut-off.

Compatible load types			
Load symbol	Load type	Maximum load	Remarks
	Dimmable led lamps	200W - 230V 100W - 120V	Due to variety of led lamp designs, maximum number of LED lamps is further dependent on power factor result when connected to dimmer.
	Dimmable led drivers	200W - 230V 100W - 120V	Maximum permitted number of drivers is 200W divided by driver nameplate power rating.



power



voltage



indoor

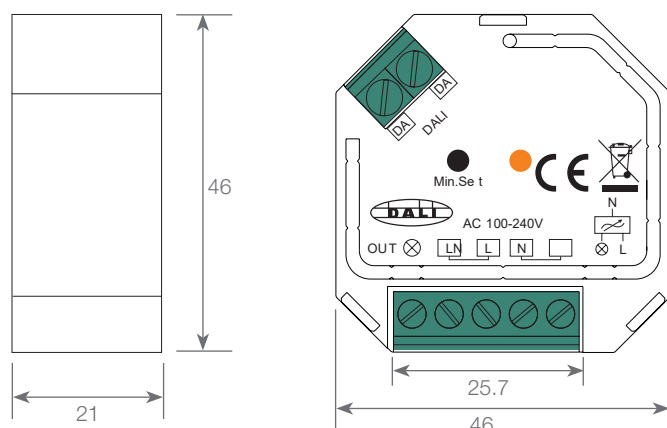


IP20

Power (W)	200W
Voltage (V)	100V -240V
Input CA min.	100V
Input CA max.	240V
Maximum load	1A
DALI consumption	2mA
Working temperature	-20°C / +50°C
Input frequency	50Hz
Measurements	46x46x21
Waterproofing	IP20
Packaging	1 unit
Guarantee	2 years

Approved by:  

Measurements:



BARCELONA
C/ Carles Buigues, 13
08420 Canovelles
Info@luznegra.net
Tel: +34 938 402 598

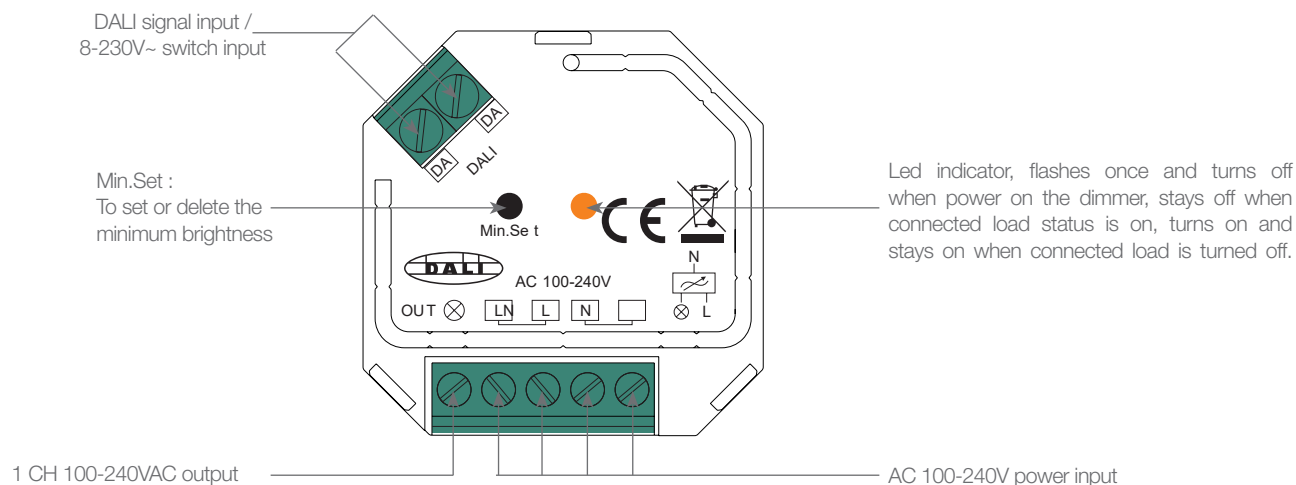
MADRID
C/ Minas, 35-37
28923 Alcorcón
centro@luznegra.net
Tel: +34 916 416 081

PARIS
113 Avenue Joffre
77450 Esbly
france@luznegra.net
Tel: +33 (0) 160 426 585

MONOCOLOUR INTENSITY DIMMER TRIAC DALI + PUSH

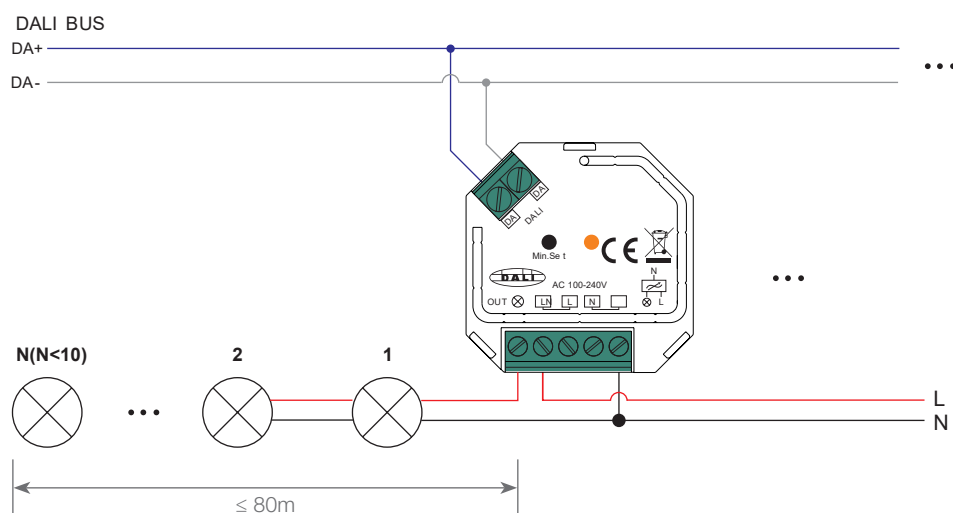
LED CONTROLLERS

Function introduction:

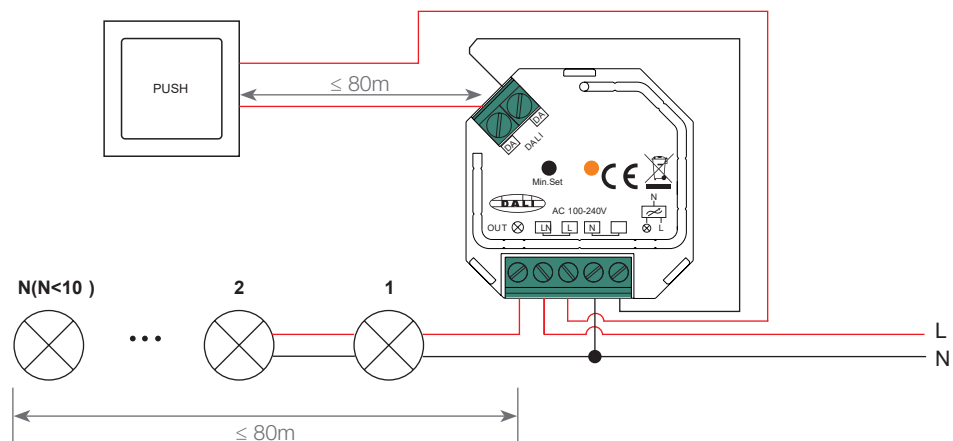


Wiring diagram

1. With DALI signal:



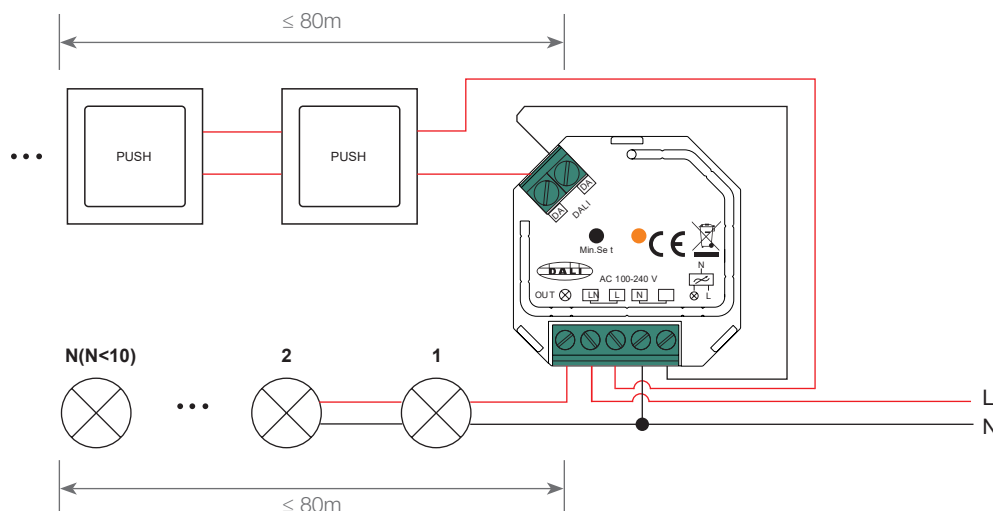
2. With single AC Push switch:



MONOCOLOUR INTENSITY DIMMER TRIAC DALI + PUSH

LED CONTROLLERS

3. With multiple AC Push switches for multiple control points:



Note:

- 1) The maximum allowed number of parallel connected drivers or luminaires shall be less than 10, otherwise the dimmer may be damaged due to the high inrush current at the moment of starting.
- 2) The maximum allowed cable length from the dimmer to connected drivers or luminaires shall not be longer than 80 metres.
- 3) The maximum allowed cable length from the push switches to the dimmer shall not be longer than 80 metres.

This phase dimmer adopts trailing edge dimming (reverse phase control), please make sure the connected loads support reverse phase control. Please refer to the user manual of the load or consult the supplier of the load.

Operation:

Setting DALI Address:

1 DALI address for 1 channel output is assigned by DALI Master controller automatically, please refer to user manuals of compatible DALI Masters for specific operations.

Setting minimum brightness:

Adjust brightness to a level, then press and hold down "Min. Set" key on the dimmer until the light flashes, once minimum brightness is set the light can only be dimmable between this minimum brightness and maximum brightness.

The dimming range of this dimmer is 1%-100%, but some load types may flicker when dimmed to 1%, thus minimum brightness shall be set higher than 1% to avoid flickering during dimming process.

Setting minimum brightness:

Adjust the brightness to maximum level, then click "Min. Set" key on the dimmer to delete the minimum brightness, the light will flash to indicate successful reset.

PUSH DIM:

While connected with PUSH switch, click the button to switch ON/OFF lights. Press and hold down the button to increase/decrease light intensity.